

Serene Scene

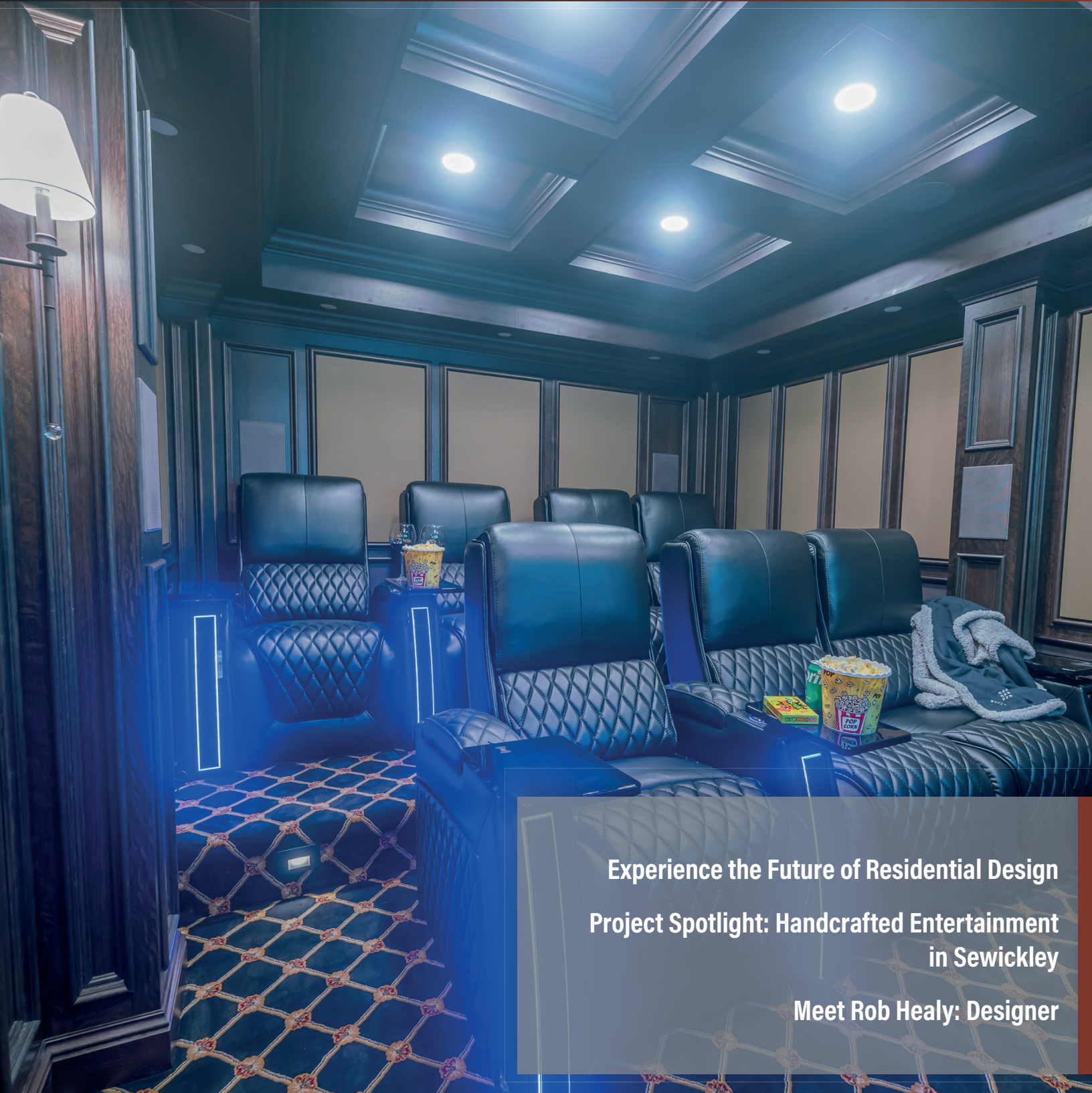
February 2023

Experience the Future of Residential Design!

PSW is on the leading edge of residential design technology

Get to Know your Designer

Rob Healy brings value to PSW clients by using his knowledge and expertise to design projects effectively and efficiently.



Experience the Future of Residential Design
Project Spotlight: Handcrafted Entertainment
in Sewickley

Meet Rob Healy: Designer

The Future of Residential Design is here

Receive highly accurate and detailed designs that meet your needs



PSW is on the leading edge of design technology

The architecture and design industry has seen a significant change over the years with the introduction of advanced technologies that make the process more efficient and effective. One of the technologies that is making waves in the industry is the Building Information Modeling (BIM) workflow. BIM workflow is a process that enables architects and designers to create, visualize, and manage building designs in a digital environment. This technology has proven to be beneficial to the industry as it improves the accuracy and functionality of designs, making it a critical part of the future of residential design in Pittsburgh.

BIM workflow integrates various design tools, such as 3D modeling, data management, and simulation analysis, into a single platform. This technology allows architects and designers to create a detailed and comprehensive model of a building, enabling them to identify design conflicts and make necessary modifications before construction begins. This workflow involves a collaborative approach, which

enables architects, designers, engineers, and other stakeholders to work together, sharing information and making changes in real-time. This collaborative approach reduces the chances of errors, saves time, and increases the efficiency of the entire design process.

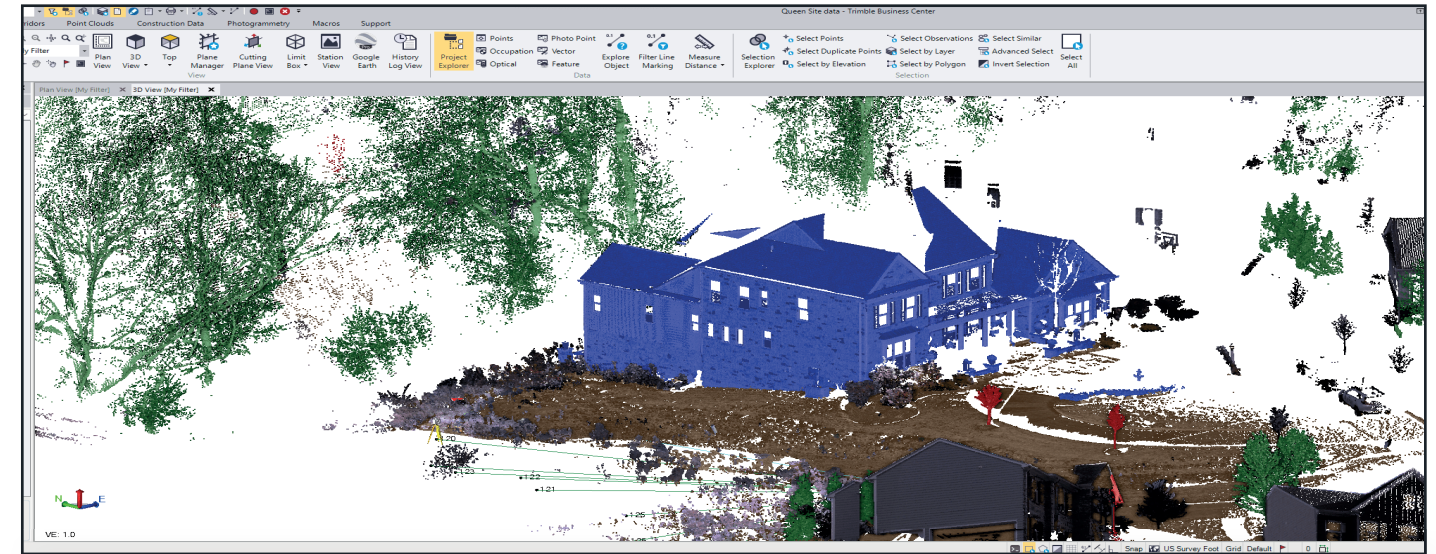
One of the key features of the BIM workflow is the use of point cloud data. Point cloud data is a collection of data points that represent the 3D shape of an object or surface. This data can be captured using a range of technologies, such as laser scanners or drones. Point cloud data is essential in BIM workflow, as it enables

architects and designers to create an accurate 3D model of a building that can be used for various purposes, such as planning, analysis, and documentation. By using point cloud data, architects and designers can create a highly accurate and detailed model of a building, which helps to reduce the chances of errors during the construction process.

Another important feature of the BIM workflow is the ability to create detailed simulations and analysis. The BIM workflow allows architects and designers to create simulations and analysis of a building's design. For instance, designers can create



ABOVE:
Photorealistic rendering of an outdoor living space



ABOVE:
Point cloud data created as a highly accurate and detailed model

simulations that show how a building will perform in different weather conditions, such as wind or rain. They can also perform analysis to determine the energy efficiency of a building, which helps to reduce energy consumption and costs in the long run. By using simulations and analysis, architects and designers can create more sustainable and efficient building designs, which are critical for the future of residential design in Pittsburgh.

One of the advantages of using BIM workflow in residential design is the ability to create highly accurate and detailed designs that meet the needs

of the clients. By using BIM workflow, architects and designers can create designs that are not only aesthetically pleasing but also functional, efficient, and sustainable. BIM workflow enables designers to create designs that are tailored to the specific needs of the clients, such as accessibility, energy efficiency, and space utilization. This technology enables designers to create accurate 3D models of a building that can be used for various purposes, such as marketing, construction, and maintenance.

The future of residential design in Pittsburgh is bright, thanks to PSW's adoption of [Vectorworks](#),

their preferred BIM software. The integration of various design tools, such as point cloud data and simulations, has made the design process more efficient and effective. BIM workflow enables architects and designers to create accurate and detailed designs that meet the needs of their clients, making it an essential part of the future of residential design. As technology continues to advance, it is likely that we will see more innovations in the design industry that will make the process even more efficient and effective.

Project Spotlight:

handcrafted entertainment in Sewickley

PSW recently completed a stunning residential construction project in the Sewickley neighborhood of Pittsburgh. Originally, the clients contacted PSW for a new front porch, but after further consultation, they realized that a finished basement would better suit the current needs of their family.

The clients' vision for their finished basement included a bathroom, bar, theater room, and game room. To bring this vision to life, PSW worked closely with its trusted trade partners, Daum Contracting and Artisan Custom Woodwork. The focus of the project was to provide a truly customized space with a meticulous attention to every detail.

The result includes beautifully crafted woodwork, custom materials, and the latest technology to provide the family with the functional finished basement that they love and use daily. According to the homeowner, the kids are always down there watching movies and playing games, the husband has converted a small area into a makeshift home office, and both parents enjoy the bar and the theater room in the evenings. The



ABOVE:
Custom bar with copper railing

bathroom is a convenient addition that adds to the overall functionality of the space.

PSW is proud to have been able to provide this family with a space that brings them so much joy and will create a lifetime of family memories. This finished basement is not just a beautiful addition to their home,

but also a valuable investment that increases the overall value of the property.

To see more images and the full transformation video, please visit <https://pghsw.com/handcrafted-entertainment-in-sewickley>



ABOVE:
Custom woodworked bar with built-in LED lighting



ABOVE:
Custom bar and double door entrance to home theater



ABOVE:
Full bathroom



ABOVE:
Custom home theater with built-in surround sound

Meet Rob Healy



Designer

ROB HEALY

Rob Healy joined PSW on July 6, 2020, bringing over 20 years of experience in the landscape/hardscape industry to the team. Prior to joining PSW, Rob had held various positions in the field, including a union sprinkler fitter apprentice and a mail carrier. Despite his diverse background, Rob saw the growth potential at PSW and was eager to establish himself with the company.

Since joining PSW, Rob has seen significant changes in the company. From the company's name, to the staff, to the scope and size of projects, PSW has undergone incredible growth over the past two years. The design department has especially evolved, going from traditional to innovative in a short period of time. Rob is excited to be a part of this

progress and is proud of the direction PSW is heading.

Initially hired as a Sales and Project Manager, Rob has taken on various roles within the company over the past two years, keeping his job interesting and dynamic. His years of experience in the field, combined with his passion for the industry, make him a valuable asset to the team. Rob brings value to PSW clients by using his knowledge and expertise to manage projects effectively and efficiently, while also connecting with clients and trade partners through his integrity and engaging personality.

PSW has allowed Rob to grow both as a person and as an employee since he started. He appreciates the opportunities for growth and learning that PSW provides and is grateful to be part of a company that fosters his passion for landscape design. Rob has learned new software, such as SketchUp and BIM modeling, and is proud to be on par with top designers in the industry.



One of the most enjoyable parts of Rob's job is the design process, where he gets to work closely with clients to create beautiful spaces. He loves seeing the excitement in their eyes as they visualize the finished project and is especially proud of the satisfaction they experience when the project is complete and their family is enjoying the new outdoor space.

Despite the challenges of staying current with new materials, concepts, and technology, Rob finds his job is never stagnant and always exciting. He credits this to the supportive and collaborative team of designers, who offer unique perspectives and areas of expertise. Rob values the importance of a strong team and believes that good communication, listening, and the ability to give and take are essential for success.

Outside of work, Rob is a family man who enjoys spending time with his wife and kids. He also enjoys running, mountain biking, riding motorcycles, and relaxing with a cigar.



PSW

1000 Old Pond Road
Bridgeville, PA 15017

(412) 319-7524
pghsw.com