

Serene Scene

October 2022

Vendor Profile

Photographer Adam Rinehart showcases PSW projects in their best light!

Employee Spotlight

Jennifer McDonald navigates supply chain logistics to enhance communication and provide accurate timelines.



In their Words: with the Tennant Family

Meet Supply Chain Manager: Jennifer McDonald

Vendor Profile: Adam Rinehart

Project Update: Basement Renovation in Sewickley

In their Words: with the Tennant Family

We recently sat down with Justin and Brooke Tennant of Venetia, PA to speak about their most recent outdoor project.

How many projects have you trusted PSW with to this point?

We've trusted PSW with two major projects to this point. The most recent including a pool and covered patio with fireplace and outdoor kitchen.

Why do you continue to trust PSW for your new living spaces?

We've trusted PSW because of their quality of work. Also, their project management. They are one of the only companies that can do everything you want them to do. The other companies that we interviewed could only do the pool, or only do the patio; PSW could do it all and they have a great design team as well.

How did PSW work with you to create your vision?

We had somewhat of a vision of what we wanted, and they really helped us take it over the finish line. We showed them some pictures of some other work that we liked, and they

were able to work with us to piece it together and make it our own.

Before breaking ground, how confident were you that you would get what you wanted?

They took us through a pretty detailed design process. From early vision talk, to showing pictures, they put a couple of design options together for us through their computer software. It was really nice as it showed the details of our house, and it was able to show us the design incorporated into the house even before the house was built.

It really gave us comfort that they knew what we wanted and were able to deliver it in the end.

You started this process before your home was built? What we're the benefits of getting PSW involved that early in the process?

Justin: Yes, the biggest benefit for us was that we we're able to get all of the construction done at once. We didn't have to make any special plans to work around finished items such as a paved driveway and they we're able to get all of the equipment on and off site with no hassles. It made it easy on them and it really made it easy on us in the long run.

Brooke: The benefit of doing the construction while the house was being constructed was that a lot of the big work, such as the digging of the pool, was done before we moved

“If you want someone who is going to do it right the first time, who is going to do it with a lot of care and quality, and who is going to be there for you and communicate every step of the way, you're going to want to go with PSW.”



ABOVE:
Completed living space with Californian feel

in. Once we were here, it was mostly finishing work. It worked out really well for us timing wise.

How do you feel the project fits with the overall look and feel of the house?

That's another big benefit of working with PSW's design team. We were able to go back to our home builder and talk to them about what we were planning on doing outside and make

sure we had everything in line and really coordinate between the two companies to ensure everything fit together perfectly.

If the option was there, how beneficial would it have been to have PSW build both your home and your outdoor living space?

The more you can work with one company, the less stressful it is, the

better it is, especially if you trust that the company can do everything, in one package, very well.

That's hard to find in the market, but anytime you're going through a complex build, like we just went through, the less people you need to work with, the better.

This project has really increased our quality of life.



Now that you've lived here for a while, what would your life be like if you had not included this outdoor space?

Brooke: We would spend a lot less time outside, for sure.

Justin: Yeah, we moved into this house in the Spring, and even though we built a beautiful home, the outside has really been the focus all throughout Summer. We've entertained out here, and we get a lot of compliments on how beautiful it is out here. It has been the center of the project so far.

When entertaining, what do guests typically notice first?

They tend to notice the grand scale of the project. The pavilion, the fireplace, the pool. They really like the pavers, more specifically the size of the pavers. We really wanted to go for a Californian style. We used a lot of turf features in the pool design and that is not something you typically see in Pittsburgh.

Why did you decide to go with the Californian style? How was it working as a couple to design the space?

Brooke: We've travelled a lot to the West Coast and really like that lifestyle. We saw a few homes with pools and outdoor spaces that we really liked, so we knew from the very beginning that was the style that we wanted to bring.



ABOVE:
Brooke and Justin Tennant

For the two of us, we were both on the same page as far as the design and the elements that we wanted to see in our backyard.

Justin: I think we're lucky in that we both have a very similar palette when it comes to design so there were not a lot of arguments.

What do your kids think of the new space?

Justin: Our kids can't get enough of it! This is the first pool we've ever had.

They've really enjoyed it and their friends want to come over all the time and play. We were able to have our daughter's birthday party out here, and it's just been an amazing time for the kids.

Brooke: It's nice that the kids can come home and just jump in the pool. They love it! And, as the kids get older, I like the fact that we can have their friends here, know what they're doing, ensure they're having a good time, and spend more time with them.

What makes PSW continue to stand out over other companies that you have worked with?

I would say, what drove us to PSW with this project, was the sheer scale of what we were looking to do. We wanted to get a variety of things done all at the same time. As I mentioned before, PSW is really the only company in the market that can do it all and do it all with great quality.

In addition, they make it easy on the homeowner because they have great project managers who are in constant communication. If you've been through a construction project before, you know that not everything goes right all the time, so having that constant communication and openness really helps out with a project this size.

What would you say to someone who is thinking about working with PSW?

I've already referred PSW to quite a few people. The #1 thing I say to them is, "if you want someone who is going to do it right the first time, who is going to do it with a lot of care and quality, and who is going to be there for you and communicate every step of the way, you're going to want to go with PSW."

How does the value of having the space compare to the price you paid?

Justin: If you're looking to only make a decision based on price, you're probably not going to choose PSW. But, if you want to make the decision based on quality, ease of process, and a project that really "wows" people, then stick with PSW.

Brooke: For people that have busy lives and families, to not have to micromanage every aspect of the project, and having the project managers take care of things behind the scenes, was a huge benefit as well.

If there was one word you could use to describe PSW, what would it be and why?

Justin: Quality. You get what you pay for. You get a really good final product.

Brooke: Peace of Mind. Knowing that it's done right from the beginning and that it's going to be the way that you want it to be as well.

What has this project done for your quality of life?

This project has really increased our quality of life. With a project of this scale, we spend a lot of our time outside. Either we're swimming, watching football, building a fire at night, or relaxing in the jacuzzi, we spend a lot of time outside. You look

forward to being outside and being in nature and having a place like this really adds to that.

What part of the project is your favorite? And where do you spend the majority of your time?

Brooke: I probably spend most of my time sitting next to the pool. I love looking at the water, getting some sun, and relaxing.

Justin: My favorite area is definitely by the fire watching sports. I build a fire every day no matter the temperature. I love the smell and the ambience of it. I enjoy having drinks with my neighbors and sharing a cigar is the way I like to unwind during the weekend.

How has this space affected your social life?

It seems that our house has become the focal point of entertaining as compared to our previous home. We spend a lot of time here with our neighbors and our friends which is great because we specifically built this space to spend time with them.

Is there anything else you would like to add?

Brooke: Just how easy they make it by taking care of the little details and communicating between the members of the team. They make it easy.

Justin: They are going to have your back throughout the whole project.

Meet Jennifer



Supply Chain Manager

**JENNIFER
McDONALD**

A supply chain is a system of production and delivery of products or services; it includes different activities, people, entities, information, and resources. The construction industry has been hit especially hard by supply chain issues which has caused a sharp increase in material costs.

SCM provides a competitive advantage for construction companies by managing the various factors and variables within the project more effectively and efficiently than their competitors. It ensures efficient management of materials and information to improve the performance of their suppliers.

PSW recently hired Jennifer McDonald to serve as Supply Chain Manager. McDonald previously specialized in international supply chain with a focus on improving internal processes and Standard Operating Procedures. "An improvement in supply chain at PSW will result in better long-term project management and, ultimately, in happier clients," McDonald said.

One of the most common questions asked is, "what does a Supply Chain Manager do at PSW?" McDonald responded, "Supply Chain Managers are responsible for strategic or tactical purchasing of materials, inventory management, and logistics. It's more than simply buying, it's building relationships with vendors, checking market rates, and negotiating more favorable agreements."

One of the most glaring issues McDonald is facing in her new role is the reactive nature of the construction industry. Vendors are used to getting orders and requests for materials with very little lead time. This means that vendors have a difficult time knowing what, and how much, of specific materials to keep in stock which leads to higher prices.

Another concern that McDonald is tackling is increasing visibility of materials from dozens of vendors

to dozens of job sites all around the Pittsburgh area, so they are delivered on-time and in the condition they were shipped. "By developing a systematic approach, with consistent and clear communication with the vendors, we are able to provide more accurate lead times which reduce the typical "rushed" mentality that construction companies typically face.

Having a Supply Chain Manager benefits PSW suppliers as well. "Accurate forecasting and greater lead time allows our production schedule to align with the materials that are needed for our customers. This ultimately would lessen the chance for back orders which could delay our customers", states Ian Miller, Territory Manager for Unilock Ohio.

While she has only been with PSW a short amount of time, McDonald is enjoying improving existing processes and working with the great team at PSW. "As each member of the team accomplishes their part of the process, they are able to provide me with the information and data I need to consistently execute my job at a high level."

When not working, McDonald loves spending time with Artemis, her 18-year-old Jack Russell.

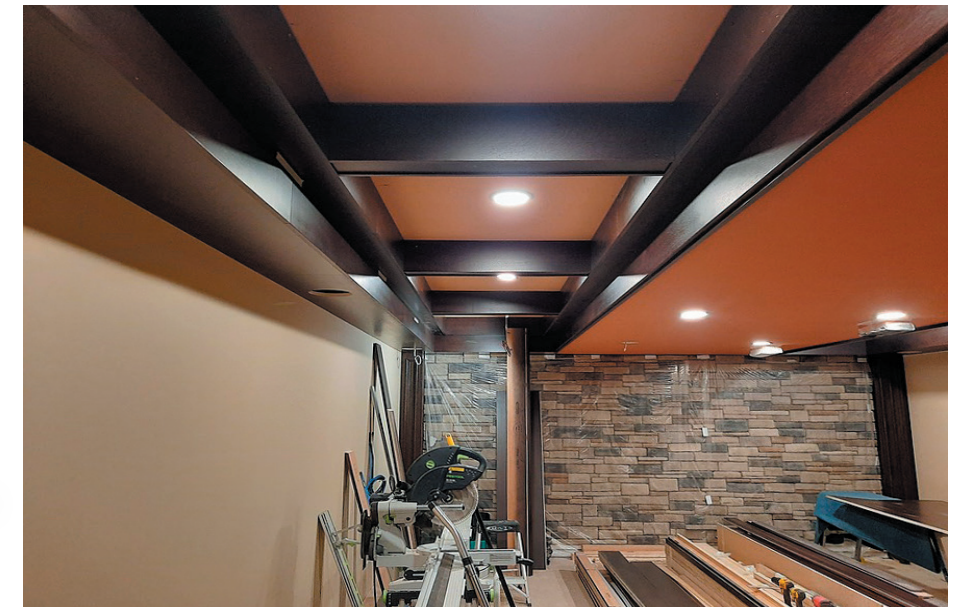
Project Update

Basement Renovation in Sewickley includes a

custom bar area

As last seen in the September edition of the Serene Scene, this basement renovation in Sewickley is almost complete. Since the last update, woodworking specialist Mike Fink has completed much of the woodwork and trim around the basement. The final steps are to add the carpeting, finalize the electrical and plumbing work, add the final audio/visual components, and let the family move into their beautiful new basement.

RIGHT:
Coffer ceiling



ABOVE:
Custom milled quarter sawn white oak scribed to stone veneer wall



ABOVE:
Theater entrance

Adam Rinehart:

the man *behind the camera*



In 1921, Frederick R. Barnard reportedly said, "A picture is worth a thousand words." Photographs connect us. They remind us of people, places, feelings, and stories. When clients come to PSW, they have a vision of how they want to live in their head. Our role is to design and create their vision and exceed their expectations. Photographing their final vision is not a simple point and click endeavor; It takes a trained

eye to capture, not just the project, but the vision behind it.

In 2022, PSW trusted Adam Rinehart to photograph several larger PSW projects. We recently sat down with Adam to learn more about the man behind the camera:

How did you get into photography?

Shortly after moving to Colorado and witnessing the sheer beauty of

the landscape and mountains, I slowly started getting into photography.

What is your favorite thing to photograph?

It is, without a doubt, mountains and scenic landscapes! In Colorado, everywhere you look is a scenic landscape that ranges from mountain peaks and canyons to sand dunes. I also really enjoy shooting astrophotography which is not as easy to capture living in the city. Being able to see

the milky way and shooting stars in your picture adds another dimension, "literally"!

When shooting landscapes, what do you look for when planning a shot?

Whether I am doing a shoot for PSW, outdoor portraits, or landscape, I almost always prefer to shoot during "Golden Hour". This is the time shortly before and after sunrise and sunset. The lighting is best during this time and will give the "glow" that most photographers look for.

I always check the weather; if it is rainy or heavy cloudy coverage, especially when shooting for PSW, I will likely cancel the shoot as the photographs won't tell the right story. Sometimes you have to be patient to get the right shot.

Lastly, I do my research. For instance, I use an app that allows me to use virtual reality to see where the sun will rise/set, and I can plan where I will shoot based off acquired data.

Why do you like shooting PSW projects?

I enjoy working with the team at PSW. They are nothing short of professional! Being able to see the work they do and being able to capture it for them has been fun!

What types of cameras do you use?

I have two cameras, a Sony a6000 (crop sensor) and Sony a7rII (full

frame). I also have a Mavic drone. Out of the three I would take the Sony a7rII, but having the drone allows me to capture a perspective that shooting on land simply cannot provide.

What do you do for fun outside of photography?

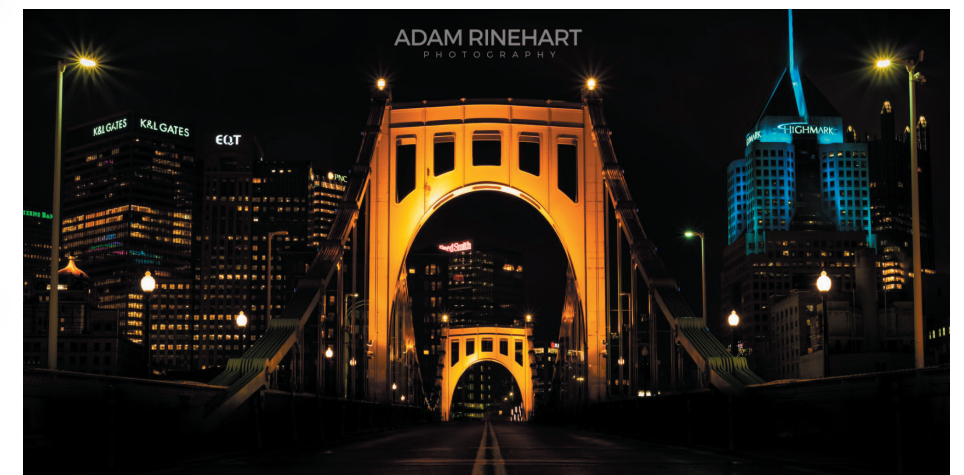
Outside of photography, I am currently a full-time graduate student at the University of Pittsburgh studying to be a physician assistant. I love the field of medicine in that it is ever evolving and there is always something new to learn and the interaction you get to create with patients/people. Other than that, you will likely find me outside hiking, biking, camping, playing or watching football and hockey or in the gym. I love maintaining an active lifestyle and doing my best to stay in "shape".

What would you say to an aspiring photographer?

Never give up! It can be challenging as an aspiring or new photographer



given the cost of equipment, getting your name out there, and learning how to shoot manually. I spent countless hours teaching myself the aperture triangle and how to frame the perfect shot. I am continuing to learn new techniques and tricks. I have made several great friends that will last a lifetime through photography, and we will always share our knowledge, so don't be afraid to ask questions.



NOW through December 1st:
10% of all purchases on Adam's website are donated to the UPMC Children's Hospital of Pittsburgh! Be sure to add "PSW" to the notes section when ordering.

www.adamrinehartphotography.com



PSW

1000 Old Pond Road
Bridgeville, PA 15017

(412) 319-7524
pghsw.com